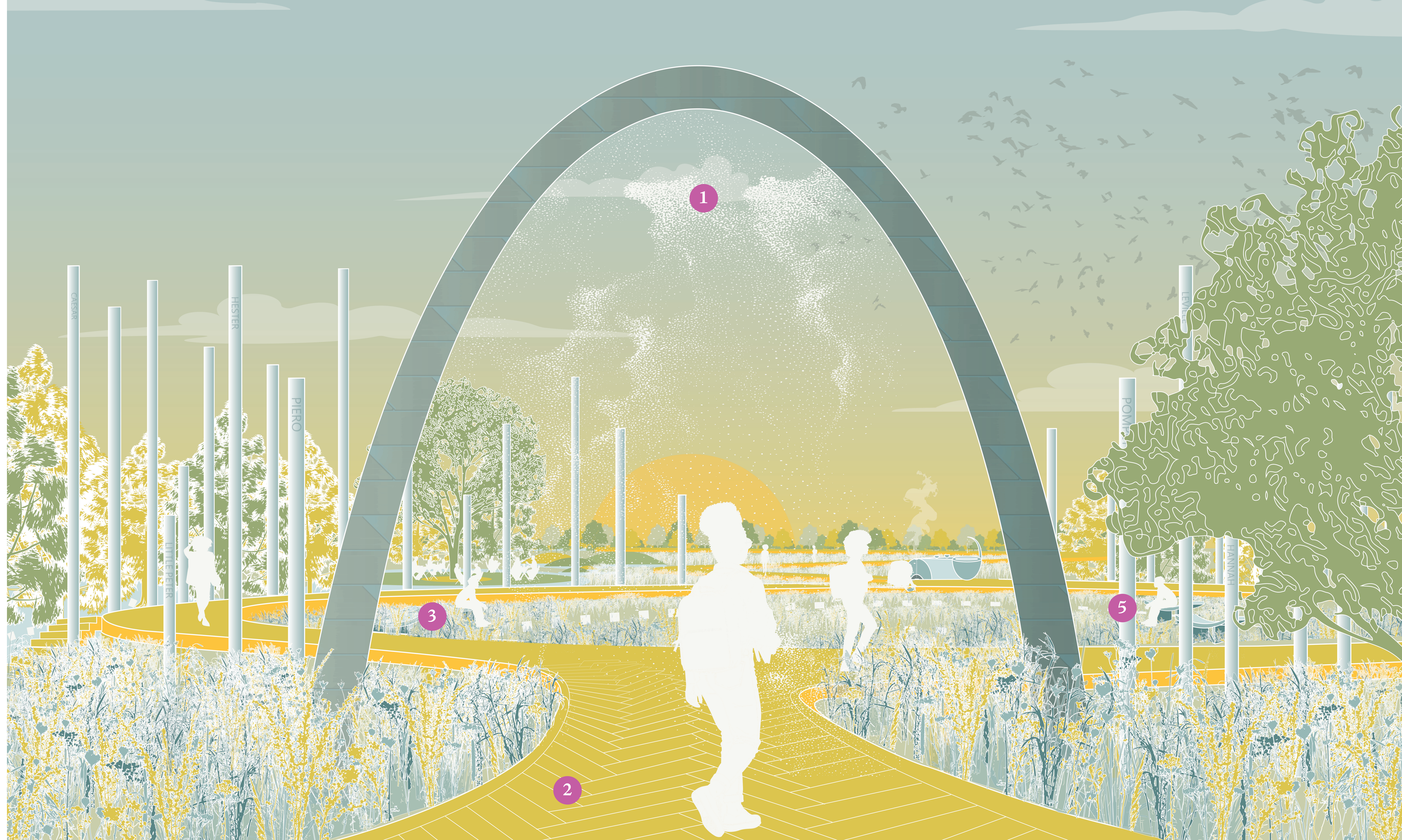


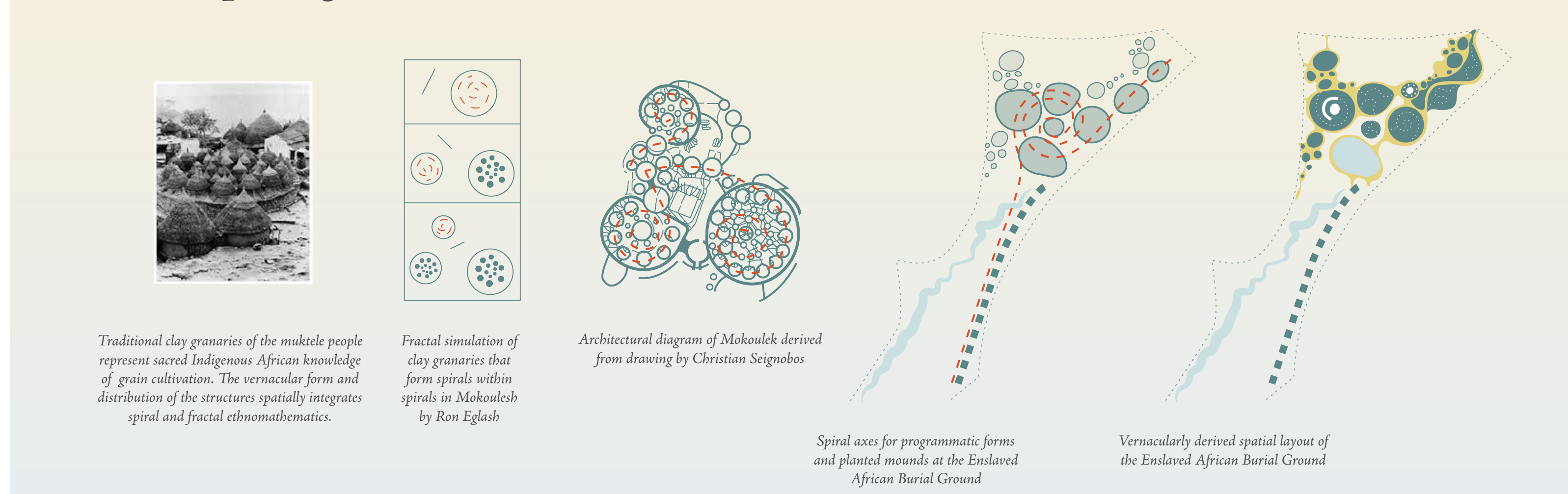
SUNSUM COLLECTIVE

Perspective A: Entering the Enslaved African Burial Ground through the Door of Return



- 1 The "Door of Return" is a Curved and monumental archway as the entrance to the Enslaved African Burial Ground. It allows visitors to enter through a dense and calm the site (see opposite page).
- 2 The boardwalk features a herringbone pattern derived from the weaving of cornucopia.
- 3 The Enslaved African Burial Ground features African inspired motifs such as subtle murals and murals to reflect.
- 4 Clay mounds inspired by various traditional African patterns can be found throughout the sacred grove area.
- 5 Harvest related patterns like woven baskets of colorful seeds are placed on the site, with seasonal flowers offering an opportunity for community members to connect their knowledge to further acknowledge their still presence.

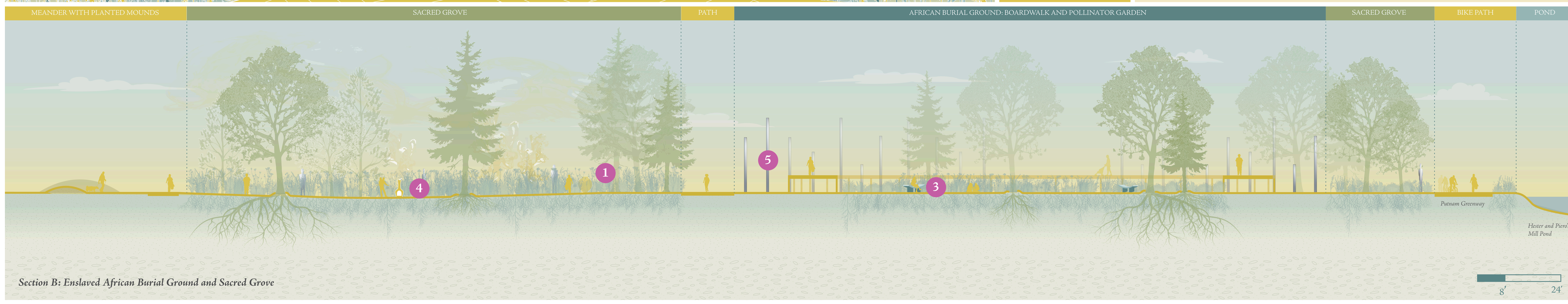
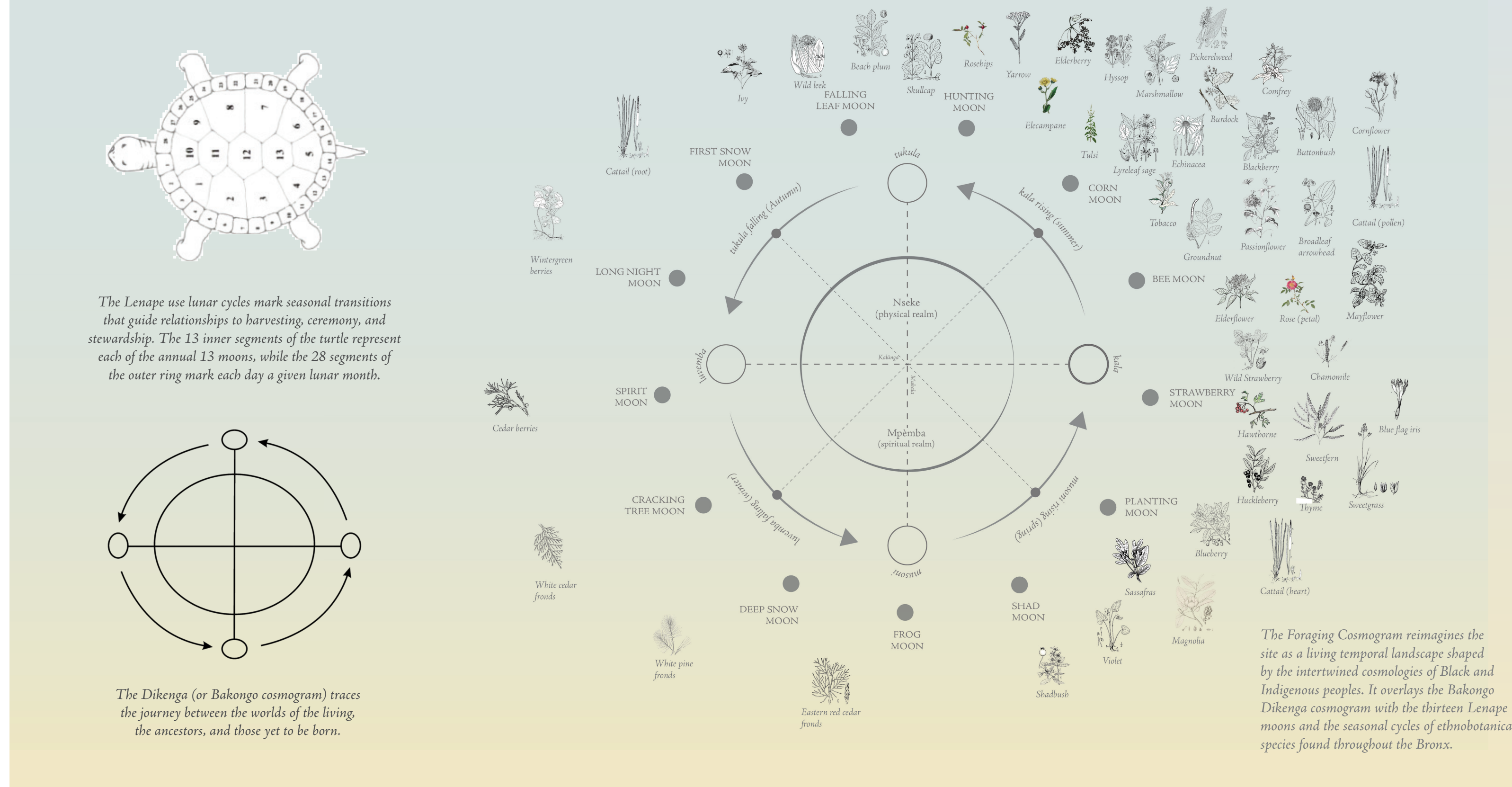
Parti/Concept Diagram



Program and Circulation Diagram



Foraging Cosmogram



Section B: Enslaved African Burial Ground and Sacred Grove

The Design Ideas Lab is part of Van Cortlandt Park Alliance's REIMAGINING initiative, in partnership with the Design Trust for Public Space and Immanuel Oni, Liminal Sp, the Legacy Council, and NYC Parks. This initiative invites the community to reimagine the park's Enslaved African Burial Ground site as a memorial space that fosters long-term healing and restoration. This project is supported by a generous grant from the Mellon Foundation. Today, and every day, we acknowledge that this land is the traditional territory of the Lenape and Algonquian peoples. We honor and thank them for their stewardship of this land and recognize their continued presence.



Reimagining the Enslaved African Burial Ground



NYC Parks



van cortlandt park alliance

DESIGN TRUST FOR PUBLIC SPACE

liminal

Learn More:



SUNSUM COLLECTIVE

Site Plan

- Nature Center
- Teens Courts
- Public Art Display
- Ethnobotanical Mounds
- At Grande Sona Pathways
- Sacred Grove
- Earthen Spiral Amphitheater with Gathering Oak and Sankofa Canopy
- Ethnobotanical Mounds
- Sacred Grove
- Modola (Tibbet's Brook) Daylighting Project
- Van Cortlandt Park South

Other features: Ethnobotanical Mounds, Sleeping Stones, Picnic Area, Adinkrahene Multi-modal path, Kinship Bridge Burial Ground, Sacred Altar, Enslaved African Burial Ground, Ashanti Reflection Benches, Door of Return, Boardwalk, HESTER AND PIERO'S MILL POND, MAJOR DEEGAN EXPRESSWAY, Van Cortlandt Golf Lake House, Sacred Grove.

- 1**

A sacred altar site at the eastern edge of the Enslaved African Burial Ground is honored through a series of ethnobotanical foraging and planting zones. Drawing from each of the four elements, the altar is a space for ancestral connection through conversation, offerings, and ritual. The altar includes a water feature, a stone, and a clay vessel. Offerings include: a series of mounds on the site.
- 2**

A small earthen amphitheater drawing from the site's spatial geometry and function as a gathering and performance space honors the site's history of forced labor and resistance. The amphitheater is a series of concentric circles that draw from the site's spatial geometry and function as a gathering and performance space. The amphitheater is a series of concentric circles that draw from the site's spatial geometry and function as a gathering and performance space.
- 3**

An adinkrahene pattern painted over the site path alongside the burial ground honors the site's history and resistance. The pattern is a series of concentric circles that draw from the site's spatial geometry and function as a gathering and performance space.
- 4**

Stepping stones offer a series of ethnobotanical foraging and planting zones. The stones are a series of concentric circles that draw from the site's spatial geometry and function as a gathering and performance space.
- 5**

The circular and spiral form of the site's pathways is based on the "Mwanda" or "Sankofa" pattern of the Enslaved African Burial Ground. The pattern is a series of concentric circles that draw from the site's spatial geometry and function as a gathering and performance space.
- 6**

Clay vessels inspired by various traditional African practices are placed throughout the sacred grove area.
- 7**

Mirrored figures on the sacred grove area offer reflection between the material and spiritual realms. The figures are a series of concentric circles that draw from the site's spatial geometry and function as a gathering and performance space.

Case Study 1: Osun-Osoogbo Sacred Grove

Case Study 2: Brooklyn Naval Cemetery Landscape

Case Study 1: Osun-Osoogbo Sacred Grove

Case Study 2: Brooklyn Naval Cemetery Landscape

Case Study 1: Osun-Osoogbo Sacred Grove

Case Study 2: Brooklyn Naval Cemetery Landscape

Case Study 1: Osun-Osoogbo Sacred Grove

Case Study 2: Brooklyn Naval Cemetery Landscape

Perspective B: Meandering Pathways and Ethnobotanical Mounds

Section A: Daylighting Project, Greenway, and Sacred Grove

Sunsum Collective's proposal reimagines the site as a living sacred grove of remembrance, stewardship, and renewal. Drawing from African granaries and ancestral grain-harvesting traditions, particularly spatial forms rooted in concentric circles and spirals, the design reclaims cultivation as a sacred practice grounded in reciprocity between people, land, water, and future generations. This approach stands in deliberate contrast to the extractive logic of the Van Cortlandt plantation, where monocropped grain was produced through enslaved labor and exported to feed Caribbean plantation economies. Guided by the Bakongo Dikenga cosmogram, Lenape seasonal knowledge, and African diasporic traditions, the landscape integrates ceremonial spaces, restored ecologies, ethnobotanical foraging landscapes, and minimal-impact pathways, fostering ongoing cultural practice, ancestral connection, ecological care, and collective healing.